



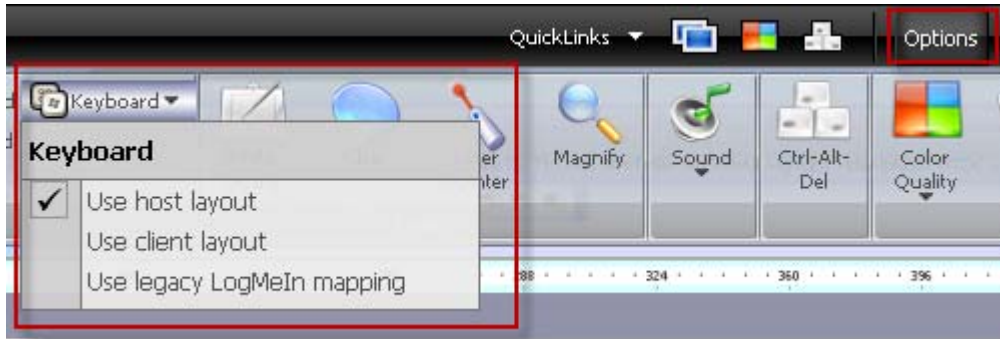
Release Notes, February 2010

Contents

Enhanced International Keyboard Handling	2
ActiveX Command Prompt.....	2
Direct Link to “Open in New Window”	3
Disable Host Wallpaper and User Interface Effects	3
Flash Remote Control.....	4
Initiate Chat with a Remote User	4
New Look and Feel.....	5
Chat Logging.....	5
System Requirements.....	5

Enhanced International Keyboard Handling

During Remote Control, the client user will be able to choose one of three new international keyboard handling options. The setting is stored on the client for each host.



To set the keyboard option during remote control, click **Options > Keyboard**.

Use host layout	Select this option to use the keyboard layout of the host. Characters and combinations entered on the client are read by the host according to their physical position on the keyboard. Client keyboard layout is ignored.
Use client layout	Select this option to use the keyboard layout of the client. Characters and combinations are sent to the host exactly as entered on the client-side. Host keyboard layout is ignored.
Use legacy LogMeIn mapping	Select this option if you are accustomed to LogMeIn's legacy keyboard mapping and prefer not to change at this time.

ActiveX Command Prompt

With RemotelyAnywhere 10, the primary Telnet client is now an ActiveX control. The Java and HTML-based versions are available as a fallback.

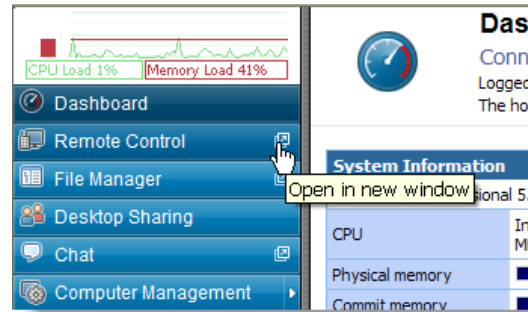
Benefits of the ActiveX control include:

- Faster loading
- Better support for special characters
- Resolution of various known limitations with the Java control

Direct Link to “Open in New Window”

We've added links that allow you to:

- Start Remote Control in new a window*
- Start File Manager in a new window*
- Start Chat in a new window*



*Opens a new tab or window based on your browser type and default browser settings

Disable Host Wallpaper and User Interface Effects

Path: Preferences > Remote Control > General Settings > Automatically disable wallpaper

Select this option to disable the following user interface effects:

- TOOLTIPFADE
- TOOLTIPANIMATION
- MENUFADE
- MENUANIMATION
- LISTBOXSMOOTHSCROLLING
- GRADIENTCAPTIONS
- COMBOBOXANIMATION
- FONTSMOOTHING
- SCREENSAVEACTIVE
- BLOCKSENDINPUTRESETS
- DRAGFULLWINDOWS
- CURSORSHADOW
- SELECTIONFADE
- DROPSHADOW
- ANIMATION

For details, see [http://msdn.microsoft.com/en-us/library/ms724947\(VS.85\).aspx](http://msdn.microsoft.com/en-us/library/ms724947(VS.85).aspx)

Flash Remote Control

RemotelyAnywhere now offers a Flash Remote Control client for systems running Flash version 9.0.115 or higher.

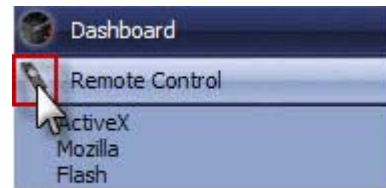
Supported platforms and browsers:

Windows XP/Vista/W7	IE6/IE7/IE8/FF2/FF3/FF3.5/Safari4/Chrome2/Chrome3/Opera9
Mac OSX 10.4/10.5/10.5	Safari3/Safari4/Firefox2/Firefox3/Firefox3.5
PCLinuxOS/Fedora9 Linux	Firefox3/Firefox3.5

Limitations: No remote printing, no remote sound, no connecting drives, no drag and drop between host and client; special keys and functions keys must be sent using the **Send Keys** button. Currently Flash remote control does not support client-side proxy servers.

How can you choose to run the Flash client?

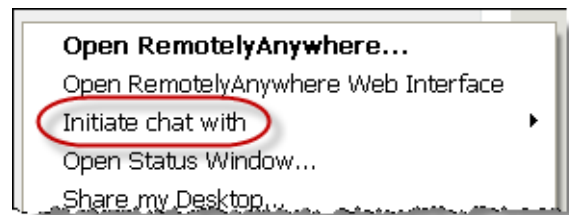
Once connected to the host, click the Remote Control icon (not the text) on the Dashboard menu and select the Flash remote control client from the list.



Initiate Chat with a Remote User

On the host, the systray menu offers a new submenu: **Initiate chat with.**

- This option is only available if there is a remote user connected
- Click to list all connected users (username/IP address)
- Select a user to send a notification to the user



Client-side behavior:

- If the remote user is on any page of the RemotelyAnywhere web interface except the File Manager, a button appears in the header that the user clicks to open chat in a new window/tab.



- If you are in File Manager, a dialog is displayed.

Note: Chat cannot be initiated from the system tray during remote control.

New Look and Feel

RemotelyAnywhere now features the same look and feel as the LogMeIn Pro² host.

Chat Logging

Chat sessions are now logged in the normal LogMeIn log files. Chat messages will be identified by a special tag in the log for easy filtering. Complete chat data will be logged: User, Text, Time/Date.

System Requirements

Host

Windows 7, Vista, XP, 2000; Server 2003, 2008

Supported Browsers for ActiveX and Firefox Plug-in

Internet Explorer 6, 7, 8

Firefox 2, 3.0, 3.5, 3.6